

# MARCH'24

PARTICIPATION  
@CAMPUSLIFE



## MARCH

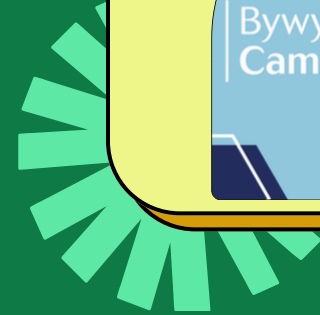
As March very swiftly draws to an end and spring sets in, even though it's extremely grey while I'm writing this, why not have a look through some of the highlights of the month from CampusLife and the wider uni, as well as plan some upcoming events and activities?

## STUDENT TIPS

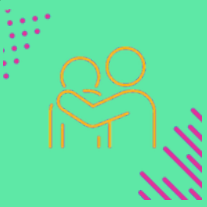
As I've settled more in to this role and the university, I've wanted to include even more of your own input into our service. Part of this is introducing a new section to the newsletter with your own tips and recommendations for other students. Whether this is for the best cafes and walks in the area, advertising your societies, recommending and advertising events or suggesting really underrated spots across the city - I'd love to hear from you! I've included a link to a quick suggestion box for you to contribute any ideas.



## WHAT'S ON?



## NEED SUPPORT?



Swansea

student  
minds

These are some fantastic resources across the university if you need help. Whether you're finding things hard at the moment and need someone to talk to, or if you need advice and guidance on something specific, these resources are there for you if and when you need them.

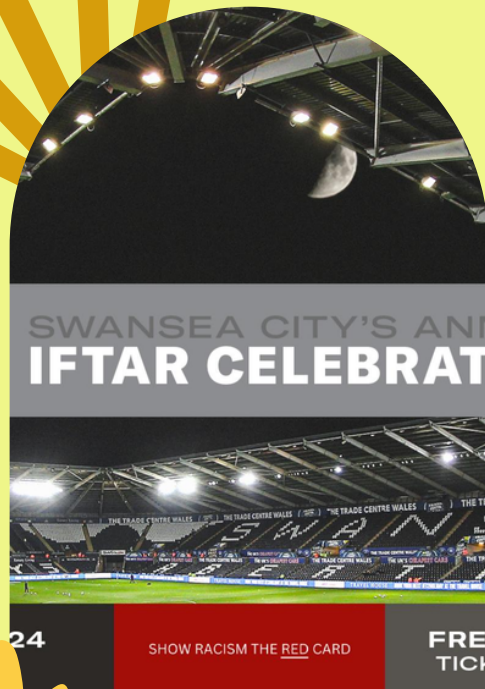
Click the links to find out more.



hapus  
The Student Life Faculty  
Partnership Approved Programme

# WHAT'S BEEN GOING ON ON CAMPUS?

This month both campuses have been buzzing with activity! In CampusLife we had the hugely popular bigger picture festival across two days, one on each campus. Year 7 students and uni students alike enjoyed the array of cultural info from a range of stalls and activities at the festival, including the opportunities to try different foods and crafts.



## SWANSEA IFTAR EVENT

The Muslim holy month of Ramadan began this month on the 10th of March and is expected to draw to a close on the 9th of April.

In Swansea last year, the Swansea.com stadium hosted its first Iftar event. The event is back for this year and is set for the evening of the 7th of April. This is a ticketed event, however it's a lovely opportunity for Muslim students to meet and break fast with others

## SUMMER ACCOMMODATION

If you are someone in need of accommodation over the summer, you may know that as a student supported by Participation@CampusLife you are entitled to 365 day a year university owned accommodation. If this sounds like something you would like to take up, please get in touch with accommodation sooner rather than later to ensure your place.



## THINKING ABOUT HOUSING?

After first year, many students will move off campus and into private accommodation, either independently or with a group of others. Did you know this isn't compulsory? At Swansea, you are still able to apply for a place in University owned accommodation throughout your studies.

However, if you are looking to move out into the bustling wider Swansea area, the Students Union has a fab guide on housing in the city and tips for finding the right place for you.

Click the pictures to find out.

These links are for organisations that support specifically for care leavers and people who are estranged, if you would like to know more about them click on the links.



If you do not wish to receive these newsletters, please opt out by emailing [participation.campuslife@swansea.ac.uk](mailto:participation.campuslife@swansea.ac.uk)